

# SharkBite™

## Poly Elbow

SharkBite™ expansion fittings are designed for use with PEX-a tubing and must be used in conjunction with expansion rings. Engineered to allow for full flow in water systems, SharkBite expansion fittings have a 25-year system warranty when used with SharkBite PEX tubing.

### Approved Applications

Residential and commercial potable water, recirculation, reclaimed water systems, hydronic heating/cooling (up to 50% glycol concentration) and direct burial.

### Specification Data

#### Materials

Body	PPSU
------	------

#### Performance

##### Max Working Pressure

80 psi	at	200°F
100 psi	at	180°F
160 psi	at	73.4°F

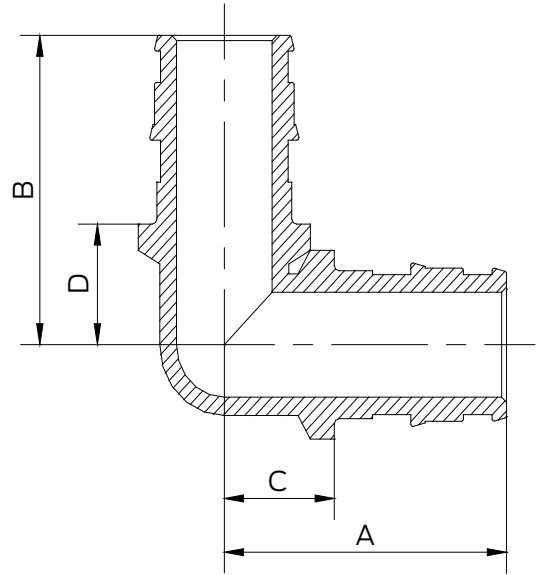
#### Minimum Length of Pipe Connecting Two Fittings

Fittings/Pipe Size	Min. Length	Insertion Depth
1/2 in.	4 in.	0.72 in.
3/4 in.	5-1/2 in.	0.97 in.
1 in.	7 in.	1.19 in.
1-1/4 in.	9 in.	1.46 in.
1-1/2 in.	11 in.	1.72 in.
2 in.	14 in.	2.17 in.

### Certifications & Listings

ASTM F1960, ASTM F877, CSA B137.5, NSF/ANSI 14, NSF/ANSI/CAN 61, NSF/ANSI/CAN 372, ASTM E84, CAN/ULC S102.2, ASTM E119, CAN/ULC S101

For listing information, please contact Customer Service.



#### Dimensions (inches)

Part #	Size	A	B	C	D
UA248	1/2"	1.32	1.32	0.60	0.60
UA256	3/4"	1.78	1.78	0.82	0.82
UA260	1"	2.27	2.27	1.08	1.08

#### Product Submittal

Name	
Date	
Architect/Owner	
Contractor	
Tag	
Notes	