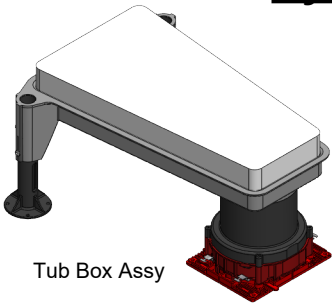
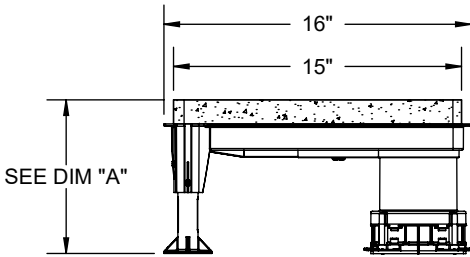
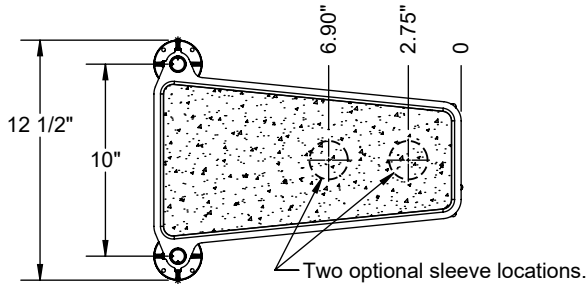


# PRODUCT SPECIFICATION DRAWING

## HydroFlame Pro Series - Tub Box, Large (3")



Tub Box Assy



Technical Data for HydroFlame Pro Firestop Device	
<b>Product Test Criteria</b>	
UL Fire Tested & Listed to UL1479 (ASTM E814) & CAN/ULC S115	
UL Ratings (consult individual product specs & UL Systems):	
"L": Yes; "F": 3 Hrs. typical; "W": Yes (UL system may require caulk)	
<b>Intumescent Fire Wrap Physical Properties, Performance</b>	
Contains no solvents or carcinogenic fillers	
Color:	Gray/Black
Material shelf/store life:	Indefinite
Heat Expansion begins:	≈ 375°F (191°C)
Greatest Expansion:	575°F-1100°F (302°C - 593°C)
Constrained Expansion:	≥ 18 times volume
Free Expansion:	≥ 37 times volume
Expansion after accelerated weathering (tested to UL 1479):	
Temperature aging:	Pass - 270 days @ 158°F (70°C)
High humidity aging:	Pass - 180 days @ 97-100% humidity, 95°F (35°C)
Application Temperature:	Minimum 15°F (-9°C) / maximum 130°F (54°C)
Temperature Resistance:	Maximum 212°F (100°C)
Surface Burning Indicates (Per ASTM E84/UL 723):	
Flame spread:	5
Smoke developed:	5

Foam Thickness	Dim "A"
2.50"	8"
3.50"	9"
4.50"	10"

SKU	Slab	Sleeve I.D.
HFPLTB-NP-0300-8	8"	Ø 3.74"
HFPLTB-TW-0300-8	8"	
HFPLTB-NP-0300-9	9"	
HFPLTB-TW-0300-9	9"	
HFPLTB-NP-0300-10	10"	
HFPLTB-TW-0300-10	10"	

The **HOLDRITE® HydroFlame Pro Series "Tub Box"** is a UL-Listed firestop device for bathtub drains. Metallic or non-metallic drain piping can be used. Thin wall drain piping requires a rubber tub box donut (included with the #HFPLTB-TW-0300-X). Nominal 1-1/2" IPS sized drain piping does not require a rubber donut (not included with the #HFPLTB-NP-0300-X). Standard tub box assembled heights are 8", 9" & 10". Kit can be cut to 5" minimum height. Rear legs are adjustable for 8"-10" Tub Box heights. For thicker slabs, add HFP sleeve extensions.

**Product Information:**

- Material:
  - Tub Box Shell, Legs: ABS
  - Spigot Adapters: PVC
  - Box Insert: Expanded Polystyrene or similar
  - Sleeve: See materials listed on Spec. Sheet for #HFP-P3 Sleeve.
- Patented & Patents Pending
- HydroFlame Pro Sleeve tested in accordance to ASTM E90. Please see appropriate testing reports for further STC information.
- See Hydroflame Pro Series Installation Instructions, Best Practices documents and the latest UL Fire Resistive Directory file (R25101) for details.

THIS INFORMATION IS PROPRIETARY TO HOLDRITE AND IS SUBJECT TO CHANGE WITHOUT NOTICE. IT MAY NOT BE REPRODUCED IN PART OR WHOLE WITHOUT WRITTEN AUTHORIZATION.



800-321-0316 OR 760-744-6944 / FAX: 760-744-0507 / WWW.HOLDRITE.COM  
spec\_HFP Series, 3" Tub Box, RevA, 08-14-20

Product Submittal	
Job Name:	
Date:	
Part Number:	Qty:
Architect / Owner:	
Contractor:	
Notes:	