

SharkBite End Cap

Innovative push-to-connect design makes for quick and easy installation. Connect two pieces of PEX, copper, CPVC, PE-RT and / or HDPE pipe in any combination. Ideal for working in tight spaces. Faster install time and ease of use reduces installation errors.

Features and Benefits

- Compatible with PEX, copper, CPVC, PE-RT and HDPE pipe in any combination.
- No special tools, crimping, glue or soldering required.
- Can be installed in wet lines.
- Approved for underground and behind-the-wall applications with no access panels (wrapping required when burying underground).
- Remove using a Disconnect Clip or Disconnect Tongs (both sold separately).
- Large diameter fittings (1-1/4 in. - 2 in.) require a Stiffener (sold separately) when connecting to PEX pipe.
- Rated for 200 psi and 200°F (93°C).
- 25-year warranty.

Applications

- Potable water
- Recirculation
- Radiant heating (w/ Glycol concentration up to 100%)
- Approved for direct burial (see wrapping for direct burial section)

Specification

The tube shall be inserted into the SharkBite PTC Fitting in the first stage through a release collar and then through a stainless-steel grab ring. The grab ring has teeth that open out and grip onto the tube. At the second stage, the tube shall be pushed through an O-ring protector, which aligns the pipe. A specially formulated EPDM O-ring shall be compressed between the wall of the fitting and the tube before the end of the tube reaches the tube stop. Only when the pipe has passed through the O-ring and reached the pipe stop shall a secure joint be created. The fitting shall be a SharkBite PTC Fitting.



U514LF



UXL0441

Specification Data

Performance

Maximum working pressure	200 psi
Maximum Temperature	200°F (93°C)

Materials

#U514LF

1 Body	DZR Lead-Free Brass ¹
2 Tube Liner	Polysulfone
3 O-ring	EPDM
4 Protection Ring	Glass Filled Nylon
5 Grab ring	Stainless Steel
6 Demount Ring	POM
7 Cartridge Ring	POM

#UXL0441

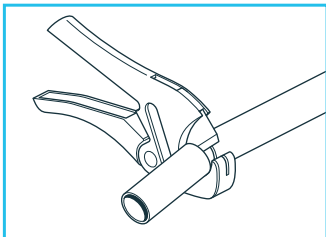
1 Body	DZR Lead-Free Brass ¹
2 O-ring	EPDM
3 Grab ring	Stainless Steel
4 Demount Ring	Acudel
5 End	Acudel

¹ Lead Free for all models, surfaces that are in contact with consumable water contain less than 0.25% lead by weight.

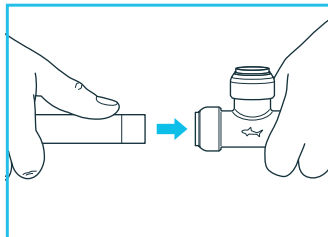
Installation Requirements

How to install SharkBite brass push-to-connect products.

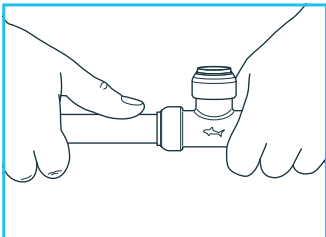
Cut



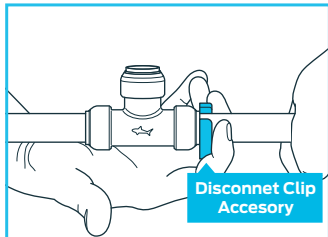
Push



Done



Disconnect



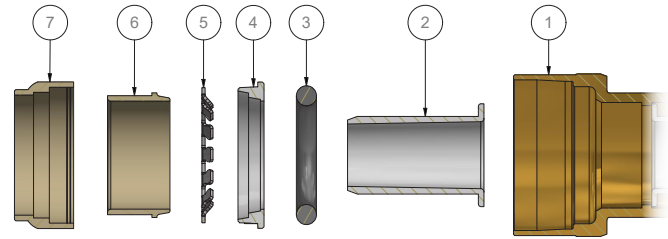
Disconnect Clip
Accessory

Pipe Type

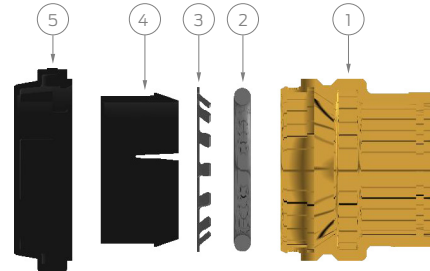
Tubing: hard drawn copper pipe type and annealed type K, L and M not to exceed 3/8 nominal complying with ASTM B 88, PEX pipe complying with ASTM F 876 or CSA B137.5, PE-RT pipe complying with ASTM F2769, or CVPC tubing complying with ASTM D2846 or CSA B137.6.

Wrapping for Direct Burial

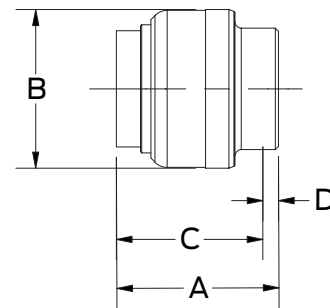
Underground burial of SharkBite brass fittings requires that the fitting be wrapped in an impermeable material to protect the connection from ground contaminants.



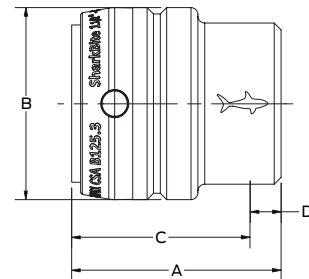
Exploded View # U514LF



Exploded View #UXL0441



#U514LF



#UXL0441

Dimensions

Description	Part #	A	B	C	D
3/8" (1/2" OD)	U512LF	1.14	0.92	0.88	0.23
1/2"	U514LF	1.02	0.97	0.94	0.10
3/4"	U518LF	1.18	1.27	1.13	0.10
1"	U520LF	1.66	1.67	1.31	0.37
1-1/4"	UXL0435	2.20	1.88	1.88	0.32
1-1/2"	UXL0441	2.40	2.21	2.05	0.36
2"	UXL0454	2.60	2.72	2.19	0.41

All measurements are displayed in inches
+/-0.063

Threaded Connectors

Teflon tape should be used with threaded SharkBite connectors to make a proper seal.

Galvanized Tubing

SharkBite Universal fittings should not be installed (threaded or push-to-connect) on galvanized tubing.

Soldering

When soldering is required near a SharkBite Universal connection, make all solder joints first and then make the SharkBite connections. Flame can cause the pipe to reach high temperatures and should not be used close to a SharkBite Universal fitting.

SharkBite Fitting Reuse

SharkBite fittings can be reused for testing purposes but any fitting used repeatedly for testing should not be used in a permanent installation.

Minimum Distance Between Fittings

1/2in. spacing between ends of completed Connections

Codes and Standards

- ASSE 1061
- CSA B125.3
- NSF/ANSI 372
- NSF/ANSI/CAN 61
- ASTM E84
- CAN/ULC S102.2
- ASTM E119
- CAN/ULC S101
- UL 263



Insertion Depth

Fitting Size	Nominal Pipe Size	Pipe OD	Insertion Depth(in)
1/4 in.	1/4 in. CTS	3/8 in.	0.82
3/8 in.	3/8 in. CTS	1/2 in.	0.94
1/2 in.	1/2 in. CTS	5/8 in.	0.95
5/8 in.	5/8 in. CTS	3/4 in.	1.13
1 in.	1 in. CTS	1-1/8 in.	1.31
1-1/4 in.	1-1/4 in. CTS	1-3/8 in.	1.88
1-1/2 in.	1-1/2 in. CTS	1-5/8 in.	2.05
2 in.	2 in. CTS	2-1/8 in.	2.19